

# HOW TO MAINTAIN GOOD MENTAL WELLBEING DURING ISOLATION

WELLBEING IS ABOUT BEING ABLE TO EXPERIENCE GOOD HEALTH, HAPPINESS AND HIGH LIFE SATISFACTION, INCLUDING MANAGING YOUR STRESS. IT'S NOT ALWAYS EASY TO FIND THE RIGHT STRATEGIES TO ESTABLISH AND MAINTAIN YOUR WELLBEING. OFTEN THE MOST SUCCESSFUL METHODS ARE UNIQUE TO YOU AND ONES THAT CAN BE CONSISTENTLY APPLIED LIKE FOR INSTANCE, EVERY WEEK.

## TOP TIPS FOR ALL

### MINDSET & THOUGHTS

SOMETIMES, WE CAN ONLY SEE THE PROBLEMS AND CHALLENGES. TRY TO TAKE A FEW MOMENTS EVERY DAY TO REFLECT, PERHAPS THROUGH WRITING IN A JOURNAL OR SPENDING FIVE MINUTES IN THE MORNING TO NOTICE SOMETHING WE CAN BE THANKFUL FOR AND FEEL POSITIVE ABOUT.



### KEEP PHYSICALLY ACTIVE

STUDIES SHOW THAT THERE IS APPROXIMATELY A 20-30% LOWER RISK OF DEPRESSION FOR ADULTS PARTICIPATING IN DAILY PHYSICAL ACTIVITY. TRY TO FOLLOW A SERIES OF FITNESS VIDEOS ONLINE OR, IF YOU PREFER, GO FOR A WALK EACH DAY. EVEN IF YOU CAN'T FIND TIME DURING THE WEEK, CARVE OUT TIME AT THE WEEKEND. MANY PEOPLE FIND THAT JUST THE CONNECTION WITH OUTDOORS AND BEING ABLE TO WALK IN AN OPEN/GREEN SPACE HELPS TO 'RESET' THEIR MIND AND WELLBEING FOR THE DAY.



### POSITIVE THOUGHTS

WHEN YOUR THOUGHTS ARE OVERWHELMINGLY NEGATIVE, WE CAN FIND IT HARD TO FIND HEADSPACE TO THINK POSITIVELY. TRY THIS... IMAGINE YOU ARE SAT ON TOP OF A HILL AND YOU ARE LOOKING DOWN AT A TRAIN TRACK BELOW WHERE TRAINS ARE COMING AND GOING. NOW IMAGINE THE TRAINS ARE YOUR THOUGHTS. WATCH THEM COME AND GO, BUT DON'T GET ON THE TRAIN. JUST WATCH THE THOUGHTS COME AND GO IN YOUR MIND WITHOUT ACTUALLY FOLLOWING THE NEGATIVE ONES DOWN AN UNHELPFUL/NEGATIVE TRACK JUST WATCH IT PASS!



### GOOD QUALITY SLEEP

IF YOUR MIND FEELS FULL UP OR YOUR EMOTIONS ARE OVERWHELMING, YOU WILL FIND IT HARD TO ENJOY A GOOD NIGHT'S SLEEP. THERE ARE LOTS OF FREE MEDITATION AND SOOTHING SOUND VIDEOS ON YOUTUBE (WAVES, RAIN, CALMING MUSIC). OR FIND A PODCAST WHICH IS FUNNY OR HUMOROUS. WRITE YOUR THOUGHTS DOWN ON A PAD OR CREATE A 'TO DO' LIST. THEN PUT THE PAD OUT OF SIGHT UNTIL THE MORNING. DEEP BREATHING FOR AT LEAST 3 MINUTES CAN ALSO HELP. IN SLOWLY THROUGH YOUR NOSE AND OUT SLOWLY THROUGH YOUR MOUTH.



### EAT WELL



A 2014 STUDY FOUND HIGH LEVELS OF WELLBEING WERE REPORTED BY INDIVIDUALS WHO ATE MORE FRUIT AND VEGETABLES. THE KEY TO BALANCING EATING WELL WITH BUSY FAMILY LIFE IS TO PLAN AHEAD. IF YOU CAN PLAN WEEKDAY MEALS AND BUY THE INGREDIENTS AHEAD OF TIME THIS REDUCES THE NUMBER OF 'LAST MINUTE' UNHEALTHY MEALS.

### ACCEPTING HELP

WE MUST BE ABLE TO LEAN ON OTHERS WHEN NECESSARY. IT IS UNREASONABLE FOR US TO ASSUME WE WILL NEVER NEED HELP THROUGHOUT OUR LIFE. THIS MEANS ACCEPTING HELP WHICH MAY BE VOLUNTEERED OR ASKING WHEN THE NEED ARISES. THE HELP COULD BE THROUGH A FRIEND, RELATIVE OR SERVICE YOU TRUST, INCLUDING NATIONAL HELPLINES.



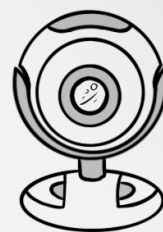
### DOING GOOD DOES YOU GOOD

THERE IS A STRONG RELATIONSHIP BETWEEN WELLBEING AND COMPASSION. DOING GOOD CAN HELP LOWER STRESS LEVELS AND IMPROVE YOUR WELLBEING AND MENTAL HEALTH. HOWEVER, THIS CAN ALSO WORK THE OTHER WAY AND YOU SHOULD ALWAYS ENSURE THAT YOU ARE NOT HELPING OTHERS AT THE COST OF YOUR OWN WELLBEING.



### STAYING CONNECTED

HIGHER RATES OF MENTAL HEALTH PROBLEMS, SUCH AS DEPRESSION AND ANXIETY, ARE ASSOCIATED WITH LONELINESS AND SOCIAL ISOLATION. OFTEN SOCIALISING WITH OTHERS CAN FEEL LIKE A LOT OF EFFORT IN THE EVENING WHEN WE'RE TIRED. HOWEVER, HEALTHY RELATIONSHIPS AND CONNECTIONS TO OTHERS HAVE A SIGNIFICANT IMPACT ON MAINTAINING GOOD WELLBEING. USING VIDEO CALLS, LIVE STREAMING OR 'FACETIMING' IS A GREAT WAY TO KEEP IN TOUCH WITH FRIENDS AND FAMILY IF YOU'RE FEELING ISOLATED. IF YOU PREFER CALLING, PICK UP THE PHONE FOR A CHAT. MAINTAINING GOOD RELATIONSHIPS HELPS TO SET A GOOD EXAMPLE FOR CHILDREN, AS THEY NOTICE AND IMITATE THE BEHAVIOUR AND EMOTIONS OF THOSE AROUND THEM.



The National College®

### MEET OUR EXPERT

THIS GUIDE HAS BEEN WRITTEN BY ANNA BATEMAN. ANNA IS PASSIONATE ABOUT PLACING PREVENTION AT THE HEART OF EVERY SCHOOL, INTEGRATING MENTAL WELLBEING WITHIN THE CURRICULUM, SCHOOL CULTURE AND SYSTEMS. SHE IS ALSO A MEMBER OF THE ADVISORY GROUP FOR THE DEPARTMENT FOR EDUCATION, ADVISING THEM ON THEIR MENTAL HEALTH GREEN PAPER.



FOR FURTHER INFO, CHECK OUT THESE ONLINE RESOURCES:

<https://www.nhs.uk>

<https://www.mentalhealth.org.uk>

<https://www.livingwell.org.au>

<https://www.mentalhealth.org.uk>